



HOME AND LAND

LOT 131, EUCALYPT ROAD, MOUNT BARKER (800M2)

FLOOR PLAN: RIO 2614
FACADE: ALLANDALE

Images shown are for illustrative purposes only and may not represent the final product such as lighting, window furnishings, timber look garage door & timber windows. Façade details including entry door and window sizing may vary between house types. Pricing also excludes features such as fencing, landscaping, letterbox, decking, driveway and any notable features of the façade. Please speak with your sales consultant for further details.

FROM*
\$551,919

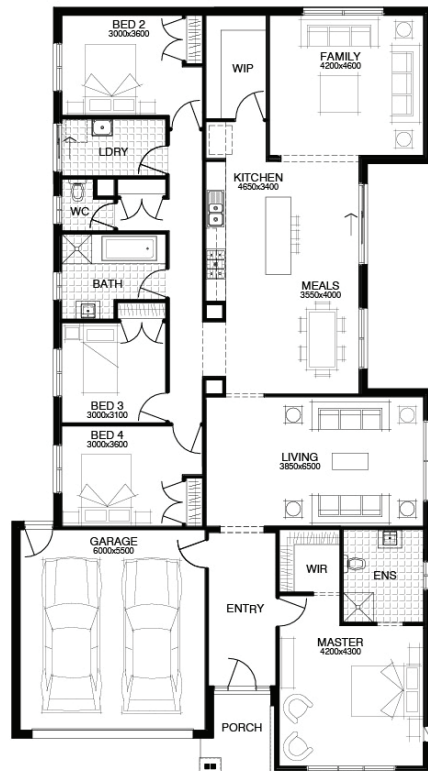
BASED ON LAND SALE OF \$285,000

4 🚗 2 🍷 2 🚗 2 🚗 26sq 📏



PACKAGE INCLUSIONS:

- ▼ GENEROUS SITE & FOOTING COSTS FIXED BEFORE CONTRACT
- ▼ DEVELOPER & COUNCIL REQUIREMENTS
- ▼ RENDER TO FACADE, EXTERNAL LIGHTS
- ▼ UPGRADED BRICKS, FLAT ROOF TILES
- ▼ QUALITY LAUNDRY & KITCHEN JOINERY
- ▼ TIMBER FINISH FLOATING FLOOR & CARPET THROUGHOUT
- ▼ LED DOWNLIGHTS, NBN READY
- ▼ FULL STORMWATER SYSTEM
- ▼ DUCTED R/C HEATING & COOLING



For enquiries please contact:
Mark Flynn
0402 125 755
Simonds.com.au

SA
ADELAIDE SA 5000
mark.flynn@simonds.com.au

