



## House and land package from \$431,807\*

Address: 133 Eucalypt Road, Mount Barker

### Inclusions:

- + Floor coverings throughout
- + Westinghouse cooktop & Oven
- + Reverse cycle ducted air conditioning
- + Driveway & perimeter concrete
- + 600m<sup>2</sup> block
- + Footings based on class 'M' soil, council approval fees included

### Nova 160



**Give us a call or drop in for a chat today.**

#### Office:

Adelaide Hills  
195 Wattle St, Malvern SA 5061  
BLD290364

Jessica Buckland

New Home Consultant

Call: 0444 582 652

Email: [jessica.buckland@gjgardner.com.au](mailto:jessica.buckland@gjgardner.com.au)

Kellie Holdsworth

Sales Manager

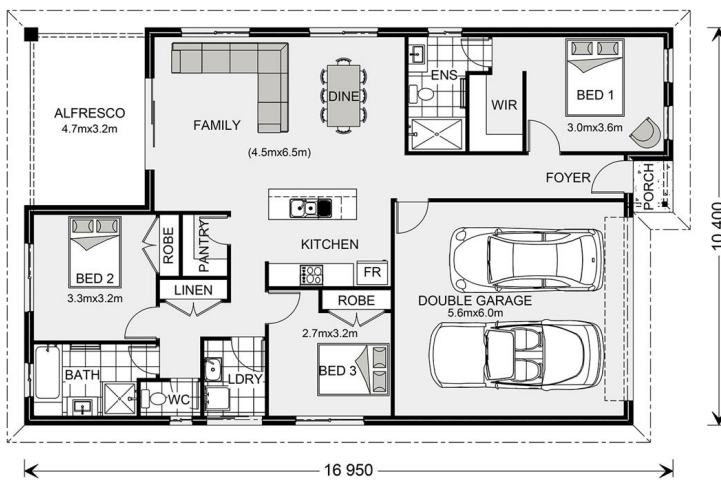
Call: 0444 560 453

Email: [kellie.holdsworth@gjgardner.com.au](mailto:kellie.holdsworth@gjgardner.com.au)

Call: 0411 328 291

Email: [stephen.holdsworth@gjgardner.com.au](mailto:stephen.holdsworth@gjgardner.com.au)

Or visit [gjgardner.com.au](http://gjgardner.com.au)



\*Images and photographs may depict fixtures, finishes and features either not supplied by G.J. Gardner Homes or not included in any price stated. These items include furniture, swimming pools, pool decks, fences, landscaping - including planter boxes, retaining walls, water features, pergolas, screens and decorative landscaping items such as fencing and outdoor kitchens and barbeques. For detailed home pricing, please talk to a new homes consultant.

Welcome **home.**

**G.J. Gardner.** HOMES