

Barlow Family Trust trading as Stroud Homes Adelaide Hills  
ABN: 47496605912 BLD Lic No: 243869

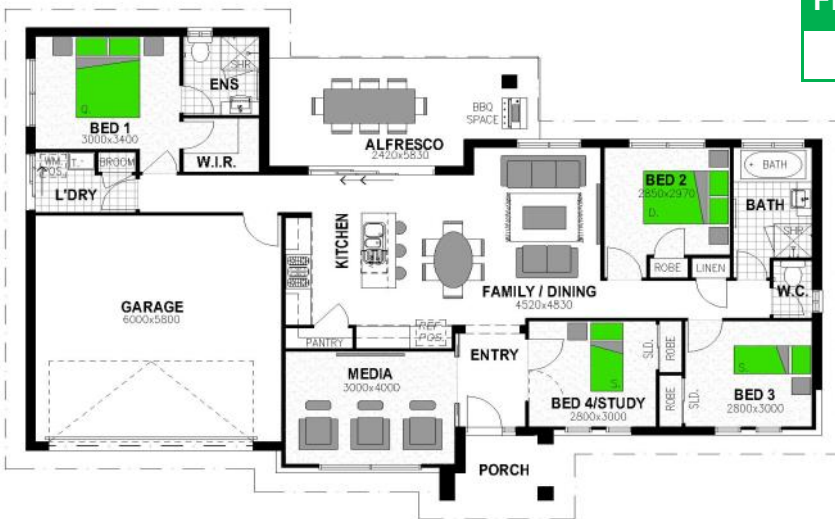
## BEECHMONT 181

COAST FAÇADE FULLY LOADED INCLUSIONS  
INCLUDES FENCING



4 BED - 2 BATH - 2 CAR - MEDIA - FAMILY

### FLOOR PLAN:



### FLOOR AREA

181.26m<sup>2</sup>

### BEECHMONT 181—COAST House & Land Package

**\$537,322**

### HOUSE SIZE

Width 18.7 m, Depth 12.7 m

### ALTERNATE FAÇADES HOUSE & LAND PACKAGES

### SKILLION FAÇADE \$547,464



### CLASSIC FAÇADE \$528,876



### INCLUSIONS - Fully Loaded:

- \*M Class Slab
- \*Site Works to 500mm
- \*6 Star energy rating
- \*Downlights to living areas, bedrooms and bathrooms
- \*Caesarstone bench tops – Kitchen & Bath
- \*900mm Westinghouse Stainless Steel Oven & Cook top
- \*900mm Westinghouse Stainless Steel Canopy

### \*Range Hood

- \*Dishlex Stainless Steel Dishwasher
- \*Soft Close Kitchen Drawers
- \*Godfrey Hirst Carpet & 450mm tiles throughout
- \*Broom finish concrete driveway (60m<sup>2</sup>)
- \*Colorbond Roof, gutters and fascia
- \*Remote Control Panel Lift Garage Door
- \*TV antenna and clothesline
- \*Termite protection (as per Australian Standards)

### LAND

Lot 130 Matilda Rise  
MOUNT BARKER 802m<sup>2</sup> \$272,000

### LAND AGENTS

Justin Hanalla 0422 343 872  
Matilda Rise RLA 276737



**Gary Barlow**

**BUILDER**  
0422 756 755

[gary.barlow@stroudhomes.com.au](mailto:gary.barlow@stroudhomes.com.au)

[www.stroudhomes.com.au](http://www.stroudhomes.com.au)